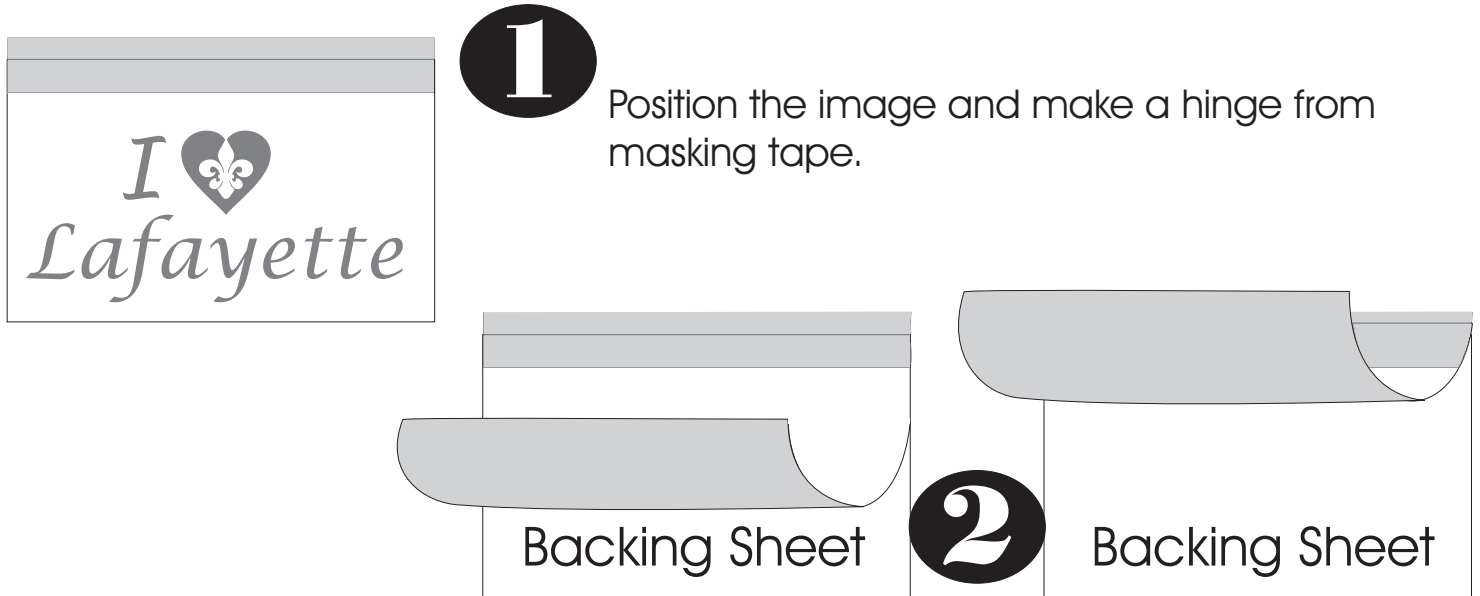


APPLICATION INSTRUCTIONS

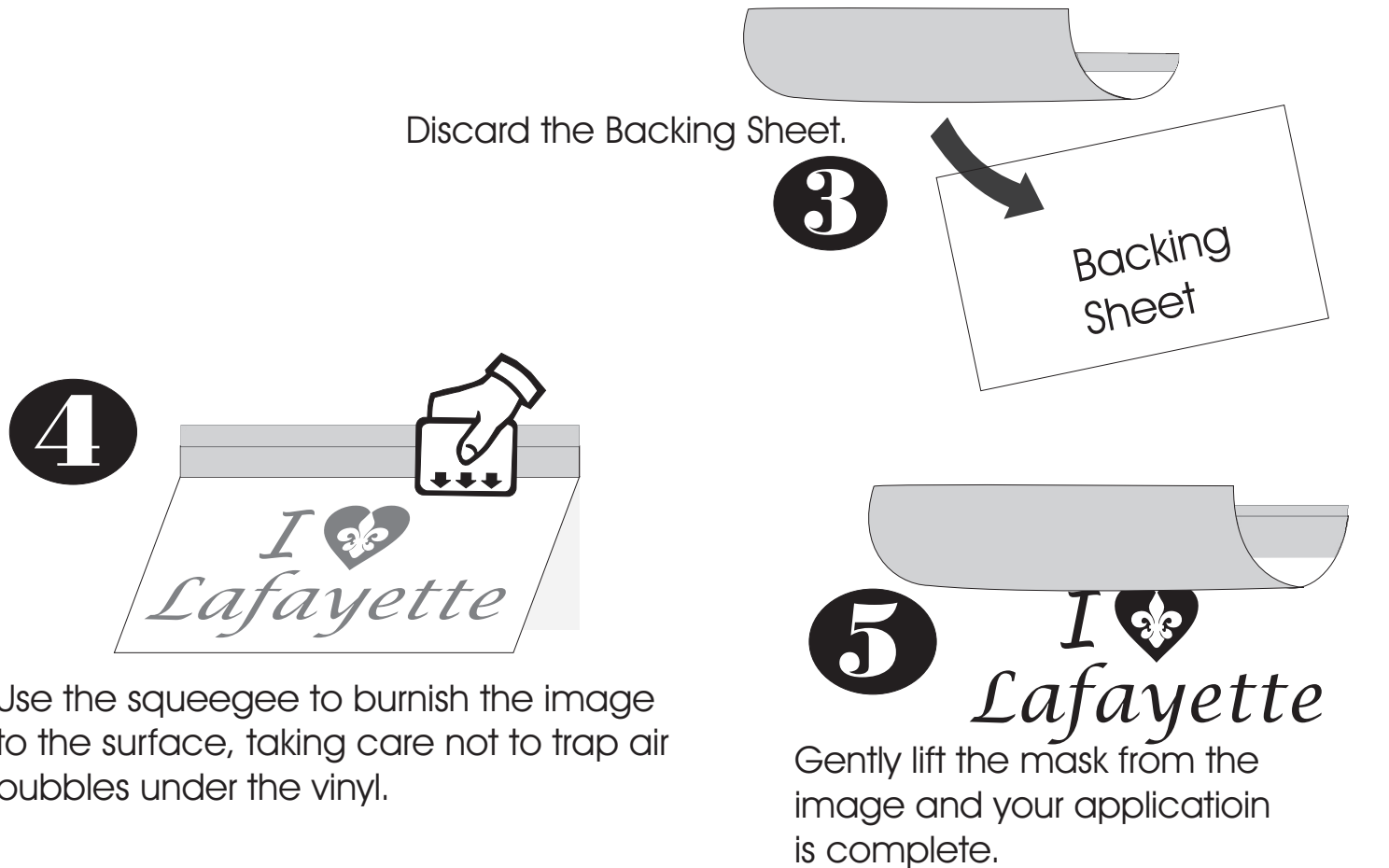
RECTANGULAR DECALS

You will need masking tape, a squeegee, the decal to apply and possibly scissors.



Separate the masked image from the Backing Sheet and peel it back so they are no longer attached to each other.

Discard the Backing Sheet.



Use the squeegee to burnish the image to the surface, taking care not to trap air bubbles under the vinyl.

Gently lift the mask from the image and your application is complete.